

SHARP

Be Original.

More Real than Reality only on
THE WORLD'S LARGEST 120" 8K UHD DISPLAY



ULTRA LARGE | 8K ULTRA HD | ULTRA DETAIL | ULTRA REALITY
ULTRA FINE 0.3MM PIXEL PITCH SINGLE PANEL

JAPAN TECHNOLOGY

HDR 10

HDMI™
HIGHER PICTURE QUALITY

DOLBY AUDIO™

8K
7680 X 4320 Pixels



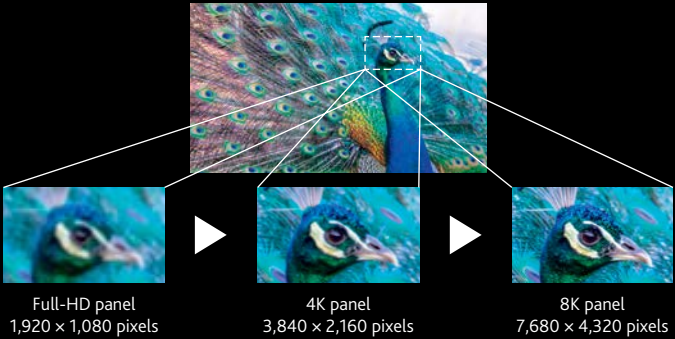
Bespoke 8K Display for unparalleled lifelike image detail and high visual clarity



With its stunning 8K Ultra-HD resolution, the Sharp **8M-B120C** display packs 33 million pixels into its enormous 120" -class panel. This 8K Display with 7,680 x 4,320 pixels achieves a screen resolution 4 times higher than what you get with a 4K panel. You can't help but feel the depth and presence of the stunningly realistic on-screen images. Sophisticated color-processing technologies support a wide range of color expression along with faithful color mapping on the display. The rich color palette with 1 billion colors adds depth to the content and brings the entire screen to life.

World's Largest 120-inch 8K Display

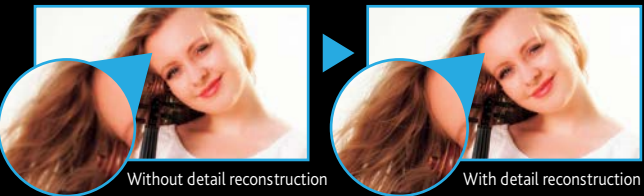
To deliver unmatched detail, 8K packs in 33 million pixels—four times what you get on a 4K panel. The combination of 8K ultra-high resolution and a mammoth 120-inch panel creates an incredibly immersive effect—putting you right inside the scene.



Note: Photos pictorially illustrate differences in resolution.

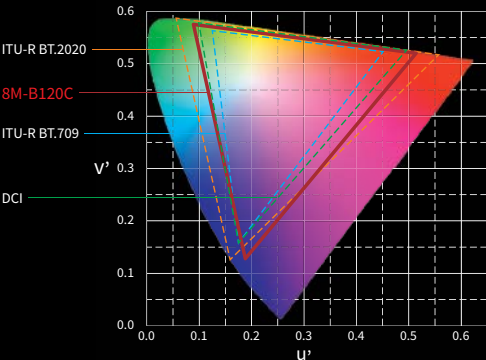
4K and full-HD upscaled to 8K

Sharp's super-resolution technology analyses video signals to work out the details that are inherent in the original subject and reconstructs minute details. This enables 4K and full-HD content to be upscaled to 8K. You get clear, ultra-high-resolution images.



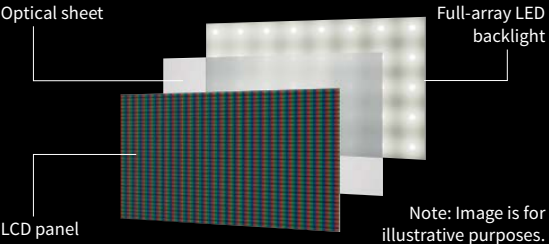
One billion colours for exceptional vividness

The 8K display employs a wide-colour-gamut colour filter and optimised LED backlight phosphors. This allows the display to reproduce a rich colour gamut (ITU-R BT.2020). You'll see improved reproduction of reds—a tell-tale measure of vividness—and improved gradations of red, blue, and green in the pixels. The rich colour palette of an 8K Display adds depth to content and brings the entire screen to life.



Area-divided full-array LED backlight

The backlight's LEDs sit behind the panel in 2,048 uniform areas. The brightness of the LEDs is controlled independently for each of these areas. Light and dark areas are more distinct, and contrast is improved to deliver lifelike images. The display supports local dimming in 2,048 zones.



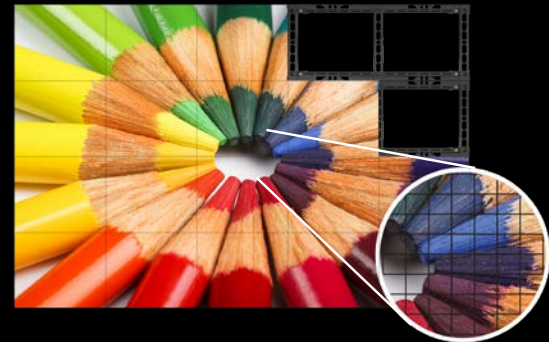
Ultra Fine 0.3mm Pixel Pitch

For best picture quality and to see finer details a low pixel pitch is ideal. With the SHARP 8M-B120C the 0.3mm pixel pitch provides for an extraordinary viewing experience. The viewer can stand very close to the display and relish the crystal clear content.

Non-modular, single panel display for easier installation and connectivity.



Sharp 8M-120C: 120" 8K Professional LED Display
Pixel Pitch : 0.3 mm
Smaller Pixel Pitch superior clarity, pixels cannot be seen from near
Minimum viewing distance: Less than 0.5 meter



Direct Modular Display
Pixel Pitch : 0.8mm and above
Larger pixel Pitch lesser clarity, pixels can be seen from near
Minimum viewing distance: 1.3 meter to 1.6 meter





Flexible installation

The 8K Professional Display comes bundled with a floor stand and wall-mounting brackets—no need for extra hardware*. Eyebolts are provided on the Display, so you can move the Display using a crane or other lifting device.

*Certain installation locations may require additional hardware. Installation costs are not included in the product price. For conditions applying to installation, please consult with your local authorised Sharp dealer or representative before purchase. Also be sure to check for safety (such as wall strength) before installing.

Fan-less Design

The SHARP 8M-B120C is designed for silent operation. The fan-less architecture is ideal for maintenance as the display comes with no air-ventilation fans



Command control via PC

The display has a LAN port that lets you control the Display from a remote PC. You can turn the power on and off, change inputs, and more.

Easy connection via a single HDMI™ cable*

The Sharp 8M-B120C display supports 8K60p/4K120p input via a single HDMI cable.

*Supports 7,680 × 4,320p 60 Hz and 3,840 × 2,160p 120 Hz, as per the HDMI 2.1 specifications.



Multi-screen and other display modes

Content in resolutions up to 4K can be enlarged and upscaled to 8K by the Display. It can also connect to four PCs via video cables to show content from the PCs on one large screen (a 2 × 2 split screen). You can also choose where to show each image on the screen or display them in a size of your choice.



Mode 1 displays enlarged content in up to 4K resolution (upscaled to 8K)



Mode 2 shows four 4K images to display in 8K resolution



Mode 3 displays four different images (multi-screen)



Mode 4 displays four different images in varying sizes (flexible multi-screen)



HDR 10 for truly realistic depth and texture

The Display's image-processing engine restores the wide luminance data recorded in the HDR 10 (High Dynamic Range) standard. Images are then optimally displayed on the high-contrast, low-reflection panel, reproduced with a realistic sense of depth and texture.

HDR10 / HLG is supported on the SHARP 8M-B120C.

Without HDR 10



Low quality Image reproduction at lower brightness



Low quality Image reproduction at higher brightness

With HDR 10



Realistic reproduction without compromising dark and light areas

Life-size images. Lifelike quality.

All-enveloping realism **8K** quality takes you to another world

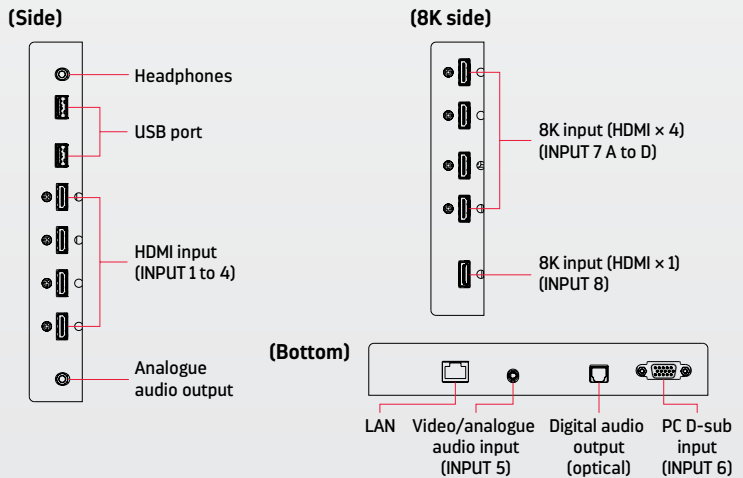


4K & Full-HD
upscale to
8K

Limited Edition

Superior audio quality with built-in 70W Speakers,
Easy connectivity & installation.

Input/Output Terminals



Main Accessories

Floor stand



(Image is for illustrative purposes)

Wall-mounting brackets

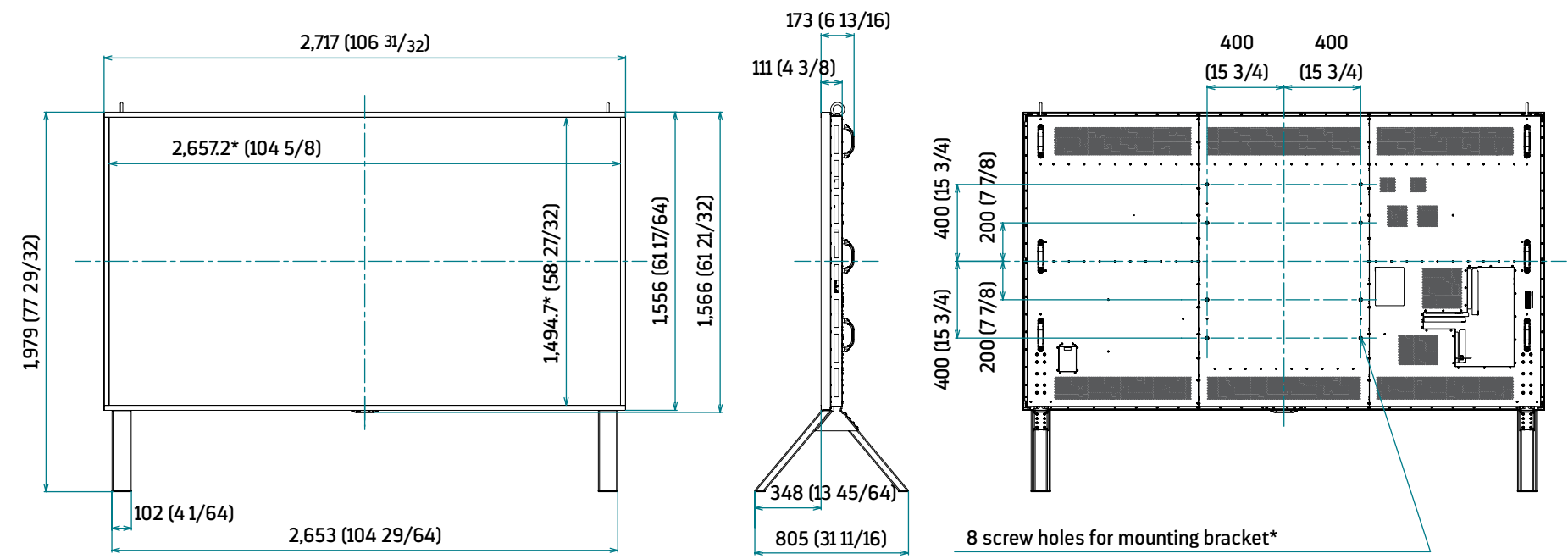


Specifications

Model	8M-B120C
Installation	Landscape
LCD Panel	120-inch class (120-inch [304.8 cm] diagonal) UV ² A ^{*1} LCD
Backlight	Full-array LED
Max. Resolution	7680 × 4,320 pixels
Max. Display Colours (approx.)	1.07 billion colours
Pixel Pitch (H × V)	0.346 × 0.346 mm
Brightness ^{*2}	Up to 600 cd/m ² (HDR: peak 1,500 cd/m ²) when connected to a 200-240VAC power source
Contrast Ratio	3,500 :1
Viewing Angle (H/V)	176°/176° (CR ≥ 10)
Active Screen Area (W × H)	2,657.2 × 1,494.7 mm (104 5/8" × 58 2/32")
Response Time	6 ms (grey to grey, avg.)
Computer Input	Video: Analogue RGB (0.7 Vp-p) [75], HDMI compliant Synchronisation: Horizontal/vertical separation (TTL: positive/negative) Plug & Play: VESA DDC2B
Input Terminals ^{*3}	HDMI: (INPUT 1: HDR [PQ/HLG] compatible, INPUT 2: ARC compatible) × 4, HDMI (for 8K): (INPUT 7: HDR [PQ/HLG] compatible, HDMI × 4) × 1, HDMI (for 8K): (INPUT 8: HDR [PQ/HLG] compatible, HDMI × 1) × 1 ^{*4} , PC analogue: Mini D-sub 15-pin × 1; USB (photos, video, music) × 2; 3.5 mm-diameter mini stereo jack (video/analogue audio) × 1 ^{*5}
Output Terminals ^{*3}	Digital audio (optical) × 1; 3.5 mm-diameter mini stereo jack (analogue audio) × 1; headphones × 1
Input/Output Terminals ^{*3}	LAN port (10Base-T/100Base-TX) × 1
Speaker Output	70 W (10 W + 10 W + 10 W + 10 W + 15 W + 15 W)
Mounting	8 points; pitch: 800 × 800 mm, 800 × 400 mm; M8 screw
Power Supply	200-240VAC 50/60Hz depending upon line voltage and power cord being used
Continuous Operation	16 hours
Power Consumption	1520W (standby 0.5W) for 200-240VAC
Environmental Conditions	Operating Temperature ^{*6} : 0°C to 40°C Operating Humidity: 20% to 80% RH (no condensation)
Dimensions (W × D × H) (approx.) (display only)	2,717 × 111 × 1,566 mm (106 3/32" × 4 3/8" × 61 2/32")
Dimensions (W × D × H) (approx.) (With Floor Stand)	2,717 × 805 × 1,979 mm (106 3/32" × 31 1/8" × 77 29/32")
Weight (approx.) Display Only	187 kg (412.3 lbs)
Weight (approx.) With Floor Stand	206 kg (454.2 lbs)
Main Accessories	AC power cord (3 meters, 3-pin ⁷), AV connector conversion cable, remote control unit, battery (AAA size) × 2, set-up manual, cable clamp × 5, floor stand, wall-mounting brackets, eyebolt cover and screws for eyebolt cover (2 sets)

^{*1}: UV2A stands for Ultraviolet-induced Multi-domain Vertical Alignment, a photo-alignment technology that ensures uniform alignment of liquid crystal molecules. ^{*2}: Brightness depends on input mode, power source, and other picture settings (260 cd/m2 at 100 V). Brightness level will decrease slightly over the lifetime of the product. Due to the physical limitations of the equipment, it is not possible to maintain a precisely constant level of brightness. ^{*3}: Use a commercially available connection cable for PC and other video connections. ^{*4}: Supports input via one HDMI cable (7,680 × 4,320p 60 Hz and 3,840 × 2,160p 120 Hz, as per the HDMI 2.1 specifications.) ^{*5}: The terminal is shared with both video and analogue audio. For video input, used the bundled conversion cable. ^{*6}: Temperature conditions may change when using the Display together with optional equipment. In such cases, check the temperature conditions specified by the optional equipment. Also, the operating temperature range may change depending on installation conditions. ^{*7}: Use a 3-pin compatible power outlet.

Dimensions:

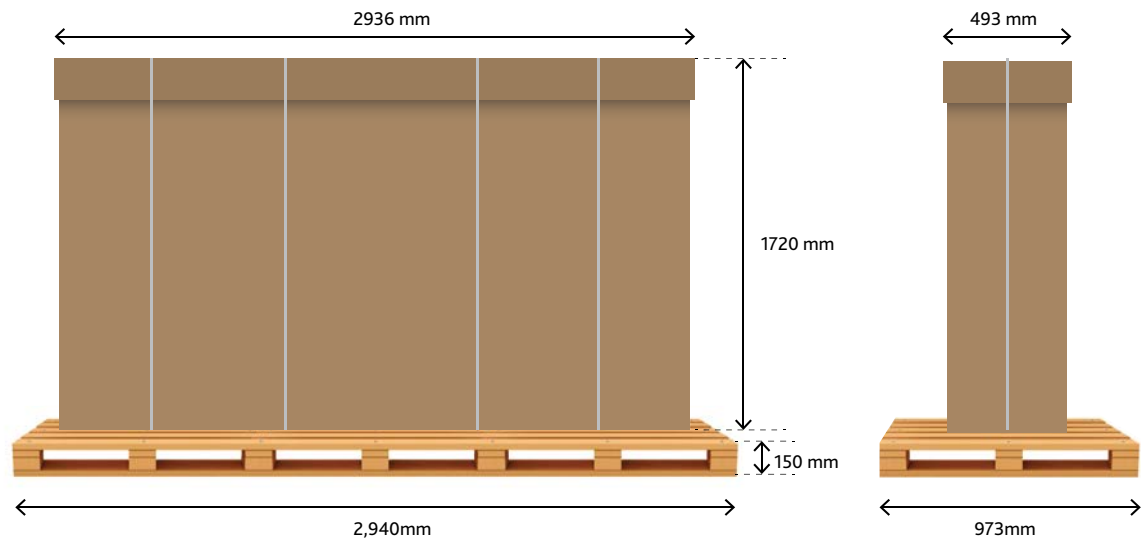


Units: mm (inch)

* Screen dimensions * To use the mounting bracket, use M8 screws that are 8 to 10 mm plus the thickness of the bracket.

Packing Dimensions

Dimension	W 2,717mm × D 111mm × H 1,566mm (only display)
Weight	Display 187kg, Stand 19kg, Mounting bracket 58kg
Package dimension (with pallet)	W 2,940mm X D 973mm X H 1,870mm
Package weight (with pallet)	379.5kg *The package box is integrated with the pallet by the nail.



8M-B120C Landscape Installation



Notice

- Before the purchase, Sharp or the partnering company will conduct a pre-site survey to verify the delivery route and to check the detail conditions of the installation site.
- In case the delivery route is not secured or the condition at the installation site is found not suitable for the installation of the product, such as for safety reasons, then Sharp/Sharp partnering company may ask to reconsider the purchase of the product.
- There may be cases in which reinforcement work (floor and walls) are necessary depending on conditions at the installation site.
- A standard stand or mounting bracket will be necessary for installation.
- The 8M-B120C has been designed for horizontal placement (landscape orientation) in an indoor environment. It cannot be installed vertically (portrait orientation), suspended from the ceiling, tilted or laid flat.
- Sufficient work space for maintenance and an open route to carry the unit out from the installation site must be maintained after installation.
- The 8M-B120C is built to order.
- Other precautions and points to note will be explained and confirmed during the pre-installation checks.

From Purchasing to Installation

1 Pre-Site Survey

- Please prepare the drawings that show the details of the installation site, the delivery route inside the building and data that show the strength of the floor.
- The survey will be conducted with the presence of the user, Sharp partners, installation specialists, architects and constructors and Sharp service personnel.

2 Estimation

- After the pre-site survey has been completed, the estimation for the expences besides the unit price, such as delivery fee, the costs for the installation site construction works, options, other related works, maintenance and disposal or the removal of items, if any will be provided based on the consultations.
- Please check the details with "Warranty terms and conditions, and Maintenance Agreement".

3 Order and Delivery

- The product is arranged as build-to-order.

4 Maintenance Agreement & Maintenance

- Please plan to sign a maintenance contract with partnering service comapany for the safe use of the product.

More About the Products - Using the product

- Mounting the Display on the wall requires special expertise and the work must be performed by an authorized SHARP dealer. You should never attempt to perform any of this work yourself. Our company will bear no responsibility for accidents or injuries caused by improper mounting or mishandling.

Catalog Notes

- Product specifications are subject to change without notice. Colours of products shown in this catalog may differ slightly from actual colours due to the limitations of the printing process.
- The images shown on the displays appearing in photographs in this catalog are simulated images.

SHARP Changes the World with 8K Technology



DESIGN AND SPECIFICATIONS ARE SUBJECT TO CHANGE WITHOUT PRIOR NOTICE.

SHARP

SHARP Middle East FZE P.O.Box 17115 Dubai Jebel Ali Free Zone, United Arab Emirates
Phone: +971 4 8815311, Fax: +971 4 8871388, e-Mail: bsdmarketing@smef.sharp-world.com

July 2021 Ver 1.0
www.ultralargedisplay.com